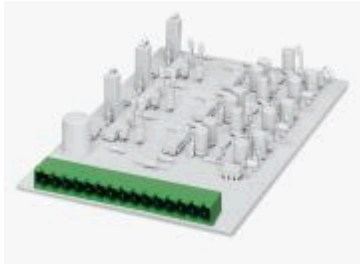


**MSTBA 2,5/...-G**

Header **with** side panels,  
plug-in direction **parallel** to the p.c.b.  
Pitch 5.0 or 5.08

	I	U
	[A]	[V]
Connection data	12	250



Description	No. of positions	Dim. a [mm]	Type	Order No.	Pcs. Pkt.
<b>Header, 5.0 mm pitch,</b> color: green	2	5	<b>MSTBA 2,5/2-G</b>	<a href="#">17 57 47 5</a>	50
	3	10	<b>MSTBA 2,5/3-G</b>	<a href="#">17 57 48 8</a>	
	4	15	<b>MSTBA 2,5/4-G</b>	<a href="#">17 57 49 1</a>	
	5	20	<b>MSTBA 2,5/5-G</b>	<a href="#">17 57 50 1</a>	
	6	25	<b>MSTBA 2,5/6-G</b>	<a href="#">17 57 51 4</a>	
	7	30	<b>MSTBA 2,5/7-G</b>	<a href="#">17 55 49 3</a>	
	8	35	<b>MSTBA 2,5/8-G</b>	<a href="#">17 57 52 7</a>	
	9	40	<b>MSTBA 2,5/9-G</b>	<a href="#">17 57 53 0</a>	
	10	45	<b>MSTBA 2,5/10-G</b>	<a href="#">17 57 54 3</a>	
	11	50	<b>MSTBA 2,5/11-G</b>	<a href="#">17 57 55 6</a>	
	12	55	<b>MSTBA 2,5/12-G</b>	<a href="#">17 57 56 9</a>	
	13	60	MSTBA 2,5/13-G	<a href="#">17 57 57 2</a>	
	14	65	<b>MSTBA 2,5/14-G</b>	<a href="#">17 57 58 5</a>	
	15	70	MSTBA 2,5/15-G	<a href="#">17 57 59 8</a>	
	16	75	<b>MSTBA 2,5/16-G</b>	<a href="#">17 57 60 8</a>	
	17	80	MSTBA 2,5/17-G	<a href="#">17 57 61 1</a>	
	18	85	MSTBA 2,5/18-G	<a href="#">17 57 62 4</a>	
	19	90	MSTBA 2,5/19-G	<a href="#">17 57 63 7</a>	
	20	95	MSTBA 2,5/20-G	<a href="#">17 57 64 0</a>	
	21	100	MSTBA 2,5/21-G	<a href="#">17 57 65 3</a>	
	22	105	MSTBA 2,5/22-G	<a href="#">17 57 66 6</a>	
	23	110	MSTBA 2,5/23-G	<a href="#">17 57 67 9</a>	
	24	115	MSTBA 2,5/24-G	<a href="#">17 57 68 2</a>	
	<b>Header, 5.08 mm pitch,</b> color: green	2	5.08	<b>MSTBA 2,5/2-G-5,08</b>	<a href="#">17 57 24 2</a>
3		10.16	<b>MSTBA 2,5/3-G-5,08</b>	<a href="#">17 57 25 5</a>	
4		15.24	<b>MSTBA 2,5/4-G-5,08</b>	<a href="#">17 57 26 8</a>	
5		20.32	<b>MSTBA 2,5/5-G-5,08</b>	<a href="#">17 57 27 1</a>	
6		25.40	<b>MSTBA 2,5/6-G-5,08</b>	<a href="#">17 57 28 4</a>	

7	30.48	<b>MSTBA 2,5/7-G-5,08</b>	<b>17 57 29 7</b>
8	35.56	<b>MSTBA 2,5/8-G-5,08</b>	<b>17 57 30 7</b>
9	40.64	<b>MSTBA 2,5/9-G-5,08</b>	<b>17 57 31 0</b>
10	45.72	<b>MSTBA 2,5/10-G-5,08</b>	<b>17 57 32 3</b>
11	50.80	<b>MSTBA 2,5/11-G-5,08</b>	<b>17 57 33 6</b>
12	55.88	<b>MSTBA 2,5/12-G-5,08</b>	<b>17 57 34 9</b>
13	60.96	MSTBA 2,5/13-G-5,08	17 57 35 2
14	66.04	<b>MSTBA 2,5/14-G-5,08</b>	<b>17 57 36 5</b>
15	71.12	MSTBA 2,5/15-G-5,08	17 57 37 8
16	76.20	<b>MSTBA 2,5/16-G-5,08</b>	<b>17 57 38 1</b>
17	81.28	MSTBA 2,5/17-G-5,08	17 57 39 4
18	86.36	MSTBA 2,5/18-G-5,08	17 57 40 4
19	91.44	MSTBA 2,5/19-G-5,08	17 57 41 7
20	96.52	MSTBA 2,5/20-G-5,08	17 57 42 0
21	101.60	MSTBA 2,5/21-G-5,08	17 57 43 3
22	106.68	MSTBA 2,5/22-G-5,08	17 57 44 6
23	111.76	MSTBA 2,5/23-G-5,08	17 57 45 9
24	116.84	MSTBA 2,5/24-G-5,08	17 57 46 2

**Technical data****Dimensions**

see description

Pitch	[mm]	5.0 / 5.08
Pin dimensions	[mm] x [mm]	1x1
Hole diameter	[mm]	1.4

**Technical data in accordance with IEC / DIN VDE**

Insulation material group	–	IIIa
Surge voltage category / contamination class	–/– III / 3	III / 2 II / 2
Rated voltage	[V] 250	320 400
Rated surge voltage	[kV] 4	4 4
Nominal current	[A]	12
Maximum load current per position	[A]	12

**Insulation material**

PBT

Inflammability class acc. to UL 94

V0

Temperature indices RTI/Ti

140/120

**Approval data (UL and CSA)**

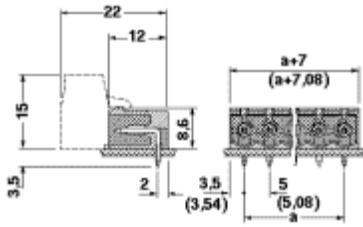
Nominal voltage / current / conductor sizes	UL: [V] / [A] / AWG	300 / 10 / –
	CSA: [V] / [A] / AWG	300 / 10 / –

Articles printed in bold can be delivered at short notice.  
Products with black or gray housing available on request.

**Note:**

Only actuate COMBICON plug connectors when under no load condition. If for operating reasons small loads must be switched, experimental values are available on request.

**Dimensional drawing**



Drilling diagram